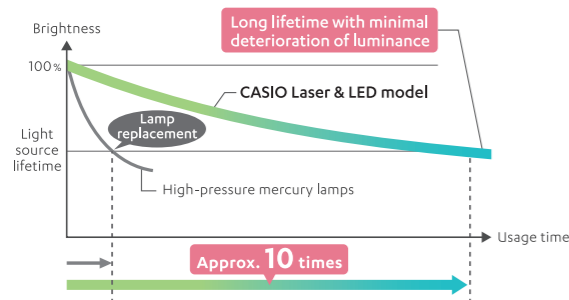


20,000-hour operation

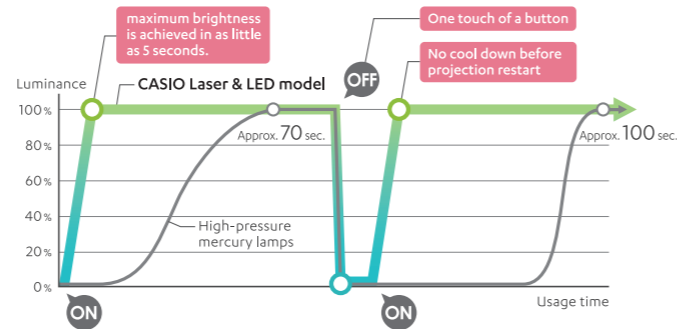
The light source has a lifetime of approx. 20,000 hours.



* Comparison with a high-pressure mercury lamp model (earlier CASIO product). As of February 2016, CASIO investigation.

Instant on/off

Projection can begin immediately when the power is turned on, with no cool down necessary after it is turned off again.



Low power consumption

Reduced power consumption allows for more cost savings and reduced CO2 emissions.

Mercury free

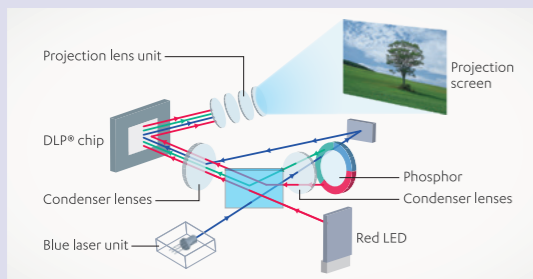
The light source achieves reduced environmental impact by eliminating the use of hazardous mercury.

Hardware features [Superior Series]



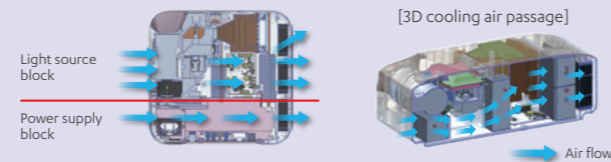
R-Hybrid light source

CASIO's unique optical engine combines a laser with an LED. It achieves high luminance by using light from a blue laser converted by the phosphor and the color wheel to complement the red light conventionally projected by red LEDs. The resulting light source realizes high brightness of 4000 lumens.



Advanced Cooling Structure

CASIO's unique technology realizes 4000 lumens high brightness, noise-reduction, compact design, and dust resistant structure at the same time.



DICOM Simulation

The newly developed color mode is ideal for displaying medical documents, such as CT and MRI scans. It employs gradated settings resembling the DICOM standard to present sharp, clear images in fine detail.



* These projectors are not medical devices and should not be used to interpret CT or MRI scans or to conduct diagnoses.

Digital screen shift

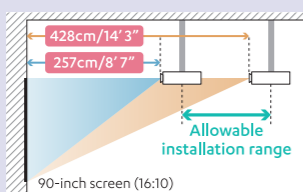
The projection screen size can be reduced without altering the ratio by changing the position of the projection up, down, or to the left or right electronically.

* Compatible models: XJ-S400LN / S400U / S400WN / S400W, XJ-F211WN / F101W / F211XN / F11X, XJ-UT352WN / UT352W / UT312WN

1.7x optical zoom

A 1.7x optical zoom makes projector installation easy by eliminating the need to change the positions of existing metal fittings.

The operating range may vary with the projector.



CASIO Mercury-Free School Program

- Safe for our children, safe for the future -

What is the CASIO Mercury-Free School Program?

CASIO's goal is to create a world without mercury, and to that end is promoting the CASIO Mercury-Free School Program. This program identifies schools at which at least 80% of the projectors in use are manufactured by CASIO, certifies such schools as being Mercury-Free Schools, and sends certificates to the schools.

https://www.casio-lampfree-projectors.com/en/environmental_activity/school/



Safety Precautions

Read the instruction manual carefully before using these products to ensure safe use.

Warning: Do not use a power source voltage, connection cord or AC adapter other than those specified. Doing so could result in fire or electric shock.

Caution: Do not position these products in a place where they might come into contact with water, moisture, steam, dust or oily smoke or in a high-temperature location. Doing so could result in fire, electric shock or equipment failure.

- Contact a nearby dealer for inquiries concerning this catalog. If you have questions your dealer cannot answer, inquire at the contact address shown below.
- Be sure you receive your warranty with the date of purchase, dealer name and other required items filled in at the time of purchase.
- The specifications, designs, etc., presented in this catalog are subject to change without notice. The color tones of the products shown may differ from those of the actual products due to printing.
- Screen images shown are superimposed graphics.
- Be sure to set up the equipment properly according to the directions in the instruction manual. Failure to make connections properly or attempts to make alterations may result in accidents.
- CASIO can accept no responsibility under such circumstances.
- The figures for brightness are averages for the products as a whole at the time of shipment and are in compliance with the ISO21118:2012 Data Projector Specifications. The measurement methods and conditions are based on Appendix B.
- Refer to the setup guide for the classifications of laser products.
- DLP and the DLP Medallion and Logo are registered trademarks of Texas Instruments of the United States.
- Windows is a registered trademark of Microsoft Corporation in the United States and other countries.
- Mac OS is a registered trademark of Apple Inc. in the United States and other countries.
- App Store is a service mark of Apple Inc., registered in the United States and other countries.
- Chrome OS, Google Play and Android are registered trademarks of Google Inc.
- MirrorOp is a registered trademark of Barco Inc.
- Other company and product names in this catalog are trademarks or registered trademarks of the respective companies.

https://web.casio-intl.com/projector/educational_solutions/



CASIO COMPUTER CO., LTD.
Tokyo, Japan

Begin Classes Quickly and Easily! 1-Click Connection Projectors

With the advent of IT education, which integrates digital contents and the Internet into the classroom, instructors need projectors that facilitate easier, more efficient teaching styles.

CASIO is preparing to support the IT classroom of the future.
We call these efforts our Educational Solutions (ES) concept.

We began by interviewing teachers and IT managers at over 40,000 schools where CASIO projectors were in use to determine the ideal performance characteristics of tomorrow's IT classroom projectors.

We reduced restrictions on the classroom layout by introducing wireless operation and replacing the complicated setting procedures with quick, easy One Click Connection.

We also installed a smartphone/tablet-based Moderator Function and a PC & Projector Remote that enables free control of projection operation of the teacher or students from anywhere in the classroom.

To simplify operation and expedite smooth classroom instruction.

To enable flexible teaching styles that encourage greater student participation.

To coordinate lessons more closely with students
and strengthen interactive communication.

After many long years,
these educational challenges have finally been overcome.

Making IT lessons smarter and more efficient.

CASIO is redefining the IT classroom of the future.

Educational Solutions



Special Solution Movie Now Available!
https://web.casio-intl.com/projector/educational_solutions/



Supporting IT Classes from Start to Finish!

Preparation

One Click Connection simplifies the projection startup process.
With quick and easy wireless projection to reduce the time and effort spent on preparation, classes can start immediately.



During Class

With the Moderator function, the students' PC connection status and projection operations are managed firsthand by the teacher. For teachers, lessons are closely coordinated with students to assure clear, easy communication of the contents.



End of Class

Auto Projection OFF makes projector operations unnecessary when classes are over. This simplifies the tidying up process and leaves the projector ready for prompt use by the next teacher.



Superior Series

WUXGA model **4000 lumens**
• XJ-S400UN [Network model] • XJ-S400U
WXGA model **4000 lumens**
• XJ-S400WN [Network model] • XJ-S400W

Advanced Series

WXGA model **3500 lumens**
• XJ-F211WN [Network model] • XJ-F101W
XGA model **3300 lumens**
• XJ-F211XN [Network model] • XJ-F11X

Ultra Short-Throw Series

WXGA model **3500 lumens**
• XJ-UT352WN [Network model] • XJ-UT352W
WXGA model **3100 lumens**
• XJ-UT312WN [Network model]

Classes can be conducted smoothly and freely, with students deepening their understanding through active interaction among all the class members.

Preparation

One Click Connection



Just clicking on the One Click Connection ("OCC" hereinafter) icon set up for each classroom creates a wireless connection with the projector and initiates projection. The time and effort spent on activities such as establishing cable connections, switching inputs and making wireless settings are significantly reduced, so that classes can begin right away.

* The C-Connection network projection app (Windows or Mac) required.



No cable connection required.

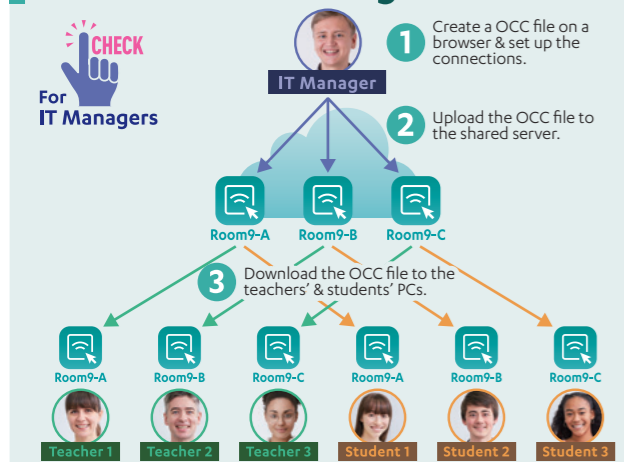


No wireless setting required.



No input content switching required.

Connection Setting on Browser



Creation of the OCC file and the projector connection settings can be conducted on the IT manager's web browser. This spares IT managers the trouble of constructing a network environment.

* The C-Connection network projection app must be installed on every PC beforehand.

Wireless Projection App C-Connection for portable

Wireless projection is possible with no software installation on your PC. You can start the network projection software from a USB flash drive with C-Connection for portable downloaded. You can perform wireless projection even on PCs which the software cannot be installed.

* Only for Windows * Application can be downloaded from the CASIO website. <https://support.casio.com/en/support/download.php?cid=007&pid=2487>

During Class

Moderator Function



This function makes it possible to manage the projection operations of students' PCs collectively by smartphone or tablet. The teacher can select any student's PC from anywhere in the classroom and project the relevant contents onto the screen immediately. This is a practical way of enhancing teaching efficiency and increasing student participation through activities such as presentation of assignments. A maximum of 40 devices can be connected simultaneously including teacher's devices.

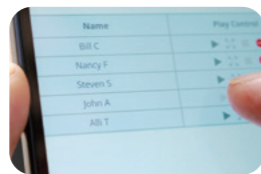
* The number of connectable devices depends on the user's network environment.

* The C-Connection network projection app (Windows/Mac) required.

For Presentations



When students click the OCC icon to indicate completion of a classroom assignment, their user names are displayed in a list on the teacher's smart device screen. This makes it easy for the teacher to tell which students have completed the assignment and to select students to present their solutions while still circulating the room.



Selecting a student from teacher's smart device.



Selected student's PC screen



Projecting the student's work onto the screen

The teacher can also select the next student easily on a smart device without reconnecting with the student's PC.

For Discussions



The PC screens of up to four students can be projected simultaneously. This approach can be used to initiate vibrant discussions in which students compare the solutions offered by various class members, deepen their understanding of the issues, and discuss multiple opinions and assertions presented by their classmates.

The ability to select the screens you want to show on the spot and project them immediately saves the time and effort required to consolidate materials on the teacher's PC each time a new solution is presented.

During Class

PC & Projector Remote



Remote control of the PC and projector by smartphone or tablet enables teachers to project the screens they want to show from anywhere in the classroom. This enables them to coordinate their lessons directly with students' input and needs.

PC Remote

Teachers can switch among teaching materials and turn pages while walking around the classroom, without returning to the podium each time.

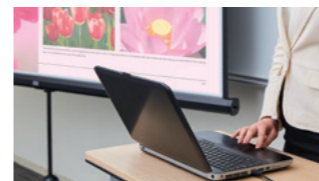
* Installation of the C-Connection network projection app on PC and the MirrorOp Receiver app on the smartphone or tablet is required.

Projector Remote

When a document camera, DVD player or other device is connected to the projector, remote switching among input terminals can be conducted as appropriate.

Other Features

Auto Input Search



When the power is turned ON after the cable is connected, the projector searches for the input signal and initiates projection automatically.

* After cable connection, input signal can also be detected by long-pressing the INPUT key on the remote control.

Countdown Timer



The ability to display a large timer in the center of the screen comes in handy for various classroom activities, such as informing students of assignment and examination time limits.

Templates



Nine built-in templates comprising frequently used borders and grids are available for use in class. Original images can also be registered.

* Original image registration is restricted to Network models.

Mirror Mode



Images can be rotated horizontally, a useful capability for studying movement and form.

ES features support chart

ES features support chart	Superior Series		Advanced Series		Ultra Short-Throw Series	
	XJ-S400UN XJ-S400WN	XJ-S400U XJ-S400W	XJ-F211WN XJ-F211XN	XJ-F101W XJ-F11X	XJ-UT352WN XJ-UT312WN	XJ-UT352W
One Click Connection*	✓	—	✓	—	✓	—
Moderator Function	✓	—	✓	—	✓	—
PC Remote*	✓	—	✓	—	✓	—
Projector Remote	✓	—	✓	—	✓	—
Auto Projection OFF	✓	✓	✓	—	✓	✓
Auto Input Search	✓	✓	✓	✓	✓	✓
Countdown Timer	✓	✓	✓	✓	✓	✓
Templates	✓	✓	✓	✓	✓	✓
Mirror Mode	✓	✓	✓	✓	✓	✓

* Only for Windows/Mac

▶ For more information on ES features, please visit our website's Quick Operation Videos.

https://web.casio-intl.com/projector/educational_solutions/videos/



Specifications

	Superior Series				Advanced Series				Ultra Short-Throw Series			
	XJ-S400UN	XJ-S400U	XJ-S400WN	XJ-S400W	XJ-F211WN	XJ-F101W	XJ-F21XN	XJ-F11X	XJ-UT352WN	XJ-UT352W	XJ-UT312WN	
Brightness ^{*1}	4000 lumens				3500 lumens				3300 lumens			
Display system	DLP® chip x1, DLP® system				DLP® chip x1, DLP® system				DLP® chip x1, DLP® system			
Display chip	WUXGA 0.67 inches (Aspect ratio: 16:10) 2,304,000 pixels (1920 dots x 1200 dots)		WXGA 0.65 inches (Aspect ratio: 16:10) 1,024,000 pixels (1280 dots x 800 dots)		WXGA 0.65 inches (Aspect ratio: 16:10) 1,024,000 pixels (1280 dots x 800 dots)		XGA 0.55 inches (Aspect ratio: 4:3) 786,432 pixels (1024 dots x 768 dots)		WXGA 0.65 inches (Aspect ratio: 16:10) 1,024,000 pixels (1280 dots x 800 dots)			
Contrast ratio	20,000 : 1				20,000 : 1				20,000 : 1			
Keystone correction	Vertical: +30° (automatic), ±30° (manual)				Vertical: +30° (automatic), ±30° (manual)				Vertical: ±5° (manual), horizontal: ±5° (manual)			
Projection lens	1.7X manual zoom, manual focus, F=2.33-3.03 / f=19.5-32.3				1.5X manual zoom, manual focus, F=2.31-2.73 / f=18.9-27.2				Fixed zoom, manual focus, F=2.3 / f=4.2			
Projected image size	30 inches (0.6 meters x 0.4 meters)-300 inches (6.5 meters x 4.0 meters)				35 inches (0.8 meters x 0.5 meters)-300 inches (6.5 meters x 4.0 meters)				30 inches (0.6 meters x 0.4 meters)-300 inches (6.5 meters x 4.0 meters)			
Projection distance	60-inch (1.3 meters x 0.8 meters)		1.64-2.78 meters (5.4-9.1 feet)		1.70-2.92 meters (5.6-9.6 feet)		1.64-2.42 meters (5.4-7.9 feet)		1.95-2.87 meters (6.4-9.4 feet)		0.13 meters (0.4 feet)	
	100-inch (2.2 meters x 1.3 meters)		2.80-4.70 meters (9.2-15.4 feet)		2.90-4.94 meters (9.5-16.2 feet)		2.81-4.11 meters (9.2-13.5 feet)		3.33-4.85 meters (10.9-15.9 feet)		0.4 meters (1.3 feet)	
	Minimum projection distance		0.77 meters (2.5 feet)		0.80 meters (2.6 feet)		0.92 meters (3.0 feet)		0.93 meters (3.1 feet)		0.06 meters (0.2 feet)	
Light source (estimated life ^{*2})	Laser & LED (up to 20,000 hours)				Laser & LED (up to 20,000 hours)				Laser & LED (up to 20,000 hours)			
Color reproduction	Full color (up to 1.07 billion colors)				Full color (up to 1.07 billion colors)				Full color (up to 1.07 billion colors)			
Scanning frequencies	Horizontal: 15-91 kHz, Vertical: 50-85 Hz				Horizontal: 15-91 kHz, Vertical: 50-85 Hz				Horizontal: 15-91 kHz, Vertical: 50-85 Hz			
Computer input	Digital input terminal				HDMI type A x2				HDMI type A x2			
	Analog input terminal				mini D-Sub 15 pin x2	mini D-Sub 15 pin x1	mini D-Sub 15 pin x2	mini D-Sub 15 pin x1	mini D-Sub 15 pin x2		HDMI type A x1	
	Monitor out terminal				mini D-Sub 15 pin x1	—	mini D-Sub 15 pin x1	—	mini D-Sub 15 pin x1			
Video input	Analog signal				Component: 480i to 1080p, Composite: NTSC, PAL, PAL-N, PAL-M, PAL60, SECAM				Component: 480i to 1080p, Composite: NTSC, PAL, PAL-N, PAL-M, PAL60, SECAM			
	Analog input terminal				Component: YCbCr/YPbPr (used for both analog computer input and component input), Analog video: Composite (RCA) x1				Component: YCbCr/YPbPr (used for both analog computer input and component input), Analog video: Composite (RCA) x1			
	Digital signal (HDMI)				480p to 1080p (Shared with HDMI Type A terminal)				480p to 1080p (Shared with HDMI Type A terminal)			
Audio	Input				3.5 mm stereo mini jack x2, RCA x1 [R/L], 3.5 mm monaural mini jack (for Mic.) x1 ^{*3}	3.5 mm stereo mini jack x1, RCA x1 [R/L]	3.5 mm stereo mini jack x2, RCA x1 [R/L], 3.5 mm monaural mini jack (for Mic.) x1 ^{*3}	3.5 mm stereo mini jack x1, RCA x1 [R/L]	3.5 mm stereo mini jack x1, RCA x1 [R/L], 3.5 mm monaural mini jack (for Mic.) x1 ^{*3}	3.5 mm stereo mini jack x2, RCA x1 [R/L], 3.5 mm monaural mini jack (for Mic.) x1 ^{*3}	3.5 mm stereo mini jack x1 (variable audio)	
	Output				3.5 mm stereo mini jack x1 (variable audio)				3.5 mm stereo mini jack x1 (variable audio)			
	Speaker				16W x1, monaural				16W x1, monaural			
Other terminals	USB host				USB 2.0 Type-A x2	—	USB 2.0 Type-A x2	—	USB 2.0 Type-A x1	—	USB 2.0 Type-A x2	
	USB power supply				DC 5V (Shared with USB host terminal)	DC 5V USB Type-A x1 (Dedicated power supply terminal)	DC 5V (Shared with USB host terminal)	DC 5V USB Type-A x1 (Dedicated power supply terminal)	DC 5V (Shared with USB host terminal)	DC 5V USB Type-A x1 (Dedicated power supply terminal)	DC 5V (Shared with USB host terminal)	
	USB function				USB 1.1 Micro-B x1 ^{*4}				USB 1.1 Micro-B x1 ^{*4}			
Control (Serial)				RS-232C (D-Sub 9pin) x1				RS-232C (D-Sub 9pin) x1				
LAN				RJ-45 x1	—	RJ-45 x1	—	RJ-45 x1	—	RJ-45 x1	—	
Wireless LAN support				IEEE 802.11 b/g/n ^{*5} (requires separately available YW-41 wireless LAN adapter)				IEEE 802.11 b/g/n ^{*5} (requires separately available YW-41 wireless LAN adapter)				
Power requirements				AC 100-240V, 50/60Hz				AC 100-240V, 50/60Hz				
Power consumption	Operating (default setting) (Light Output 7)		215W		210W		215W		210W		210W	
	Operating (minimum setting) (Light Output 1)		125W		120W		125W		120W		90W	
	Operating (Bright)		255W		250W		255W		250W		195W	
	Standby AC 100-120V Remote OFF/ON		0.09W		0.12W		0.12W		0.12W		0.12W	
	Standby AC 220-240V Remote OFF/ON		0.17W		0.23W		0.23W		0.23W		0.23W	
Approximate dimensions (W x H x D)				357 x 124 x 337 mm (not including projections)				299 x 97 x 299 mm (including projections)				
Weight				5.9 kg				3.8 kg				
Security compatibility				Kensington Compatible, Security Bar, Power On Password				Kensington Compatible, Power On Password				
Included accessories ^{*6}				Remote control, Power cord, Warranty card				Remote control, Power cord, Warranty card				

^{*1} When "Bright" is selected for "Light Control Off mode".
^{*2} Lifetime not guaranteed.
^{*3} Plug-in power type microphone are not supported.

^{*4} For firmware update and logo data registration.
^{*5} With connection of wireless LAN adapter to USB-A (Host) port.
^{*6} User's manual and Network manual available for downloading on CASIO website after the products are launched.

Projection distances

WUXGA/WXGA models (Aspect ratio: 16:10)

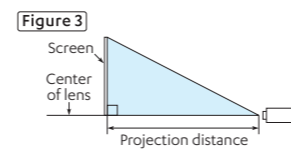
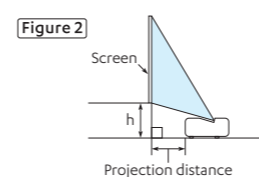
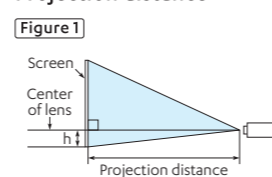
Screen size	W x H	Superior Series			Advanced Series			Ultra Short-Throw Series		
		Shortest	Longest	h	Shortest	Longest	h	Shortest	Longest	h
40-inch	0.9m x 0.5m	1.06m	1.82m	9cm	1.10m	1.91m	8cm	1.06m	1.58m	9cm
60-inch	1.3m x 0.8m	1.64m	2.78m	14cm	1.70m	2.92m	12cm	1.64m	2.42m	13cm
80-inch	1.7m x 1.1m	2.22m	3.74m	18cm	2.30m	3.93m	16cm	2.23m	3.26m	18cm
100-inch	2.2m x 1.3m	2.80m	4.70m	23cm	2.90m	4.94m	20cm	2.81m	4.11m	22cm
150-inch	3.2m x 2.0m	4.25m	7.10m	34cm	4.40m	7.45m	31cm	4.26m	6.22m	34cm
200-inch	4.3m x 2.7m	5.70m	9.50m	45cm	5.90m	9.97m	41cm	5.72m	8.32m	45cm
300-inch	6.5m x 4.0m	8.60m	14.30m	68cm	8.90m	15.01m	61cm	8.62m	12.54m	67cm

^{*} The aspect ratio is the ratio of a screen's width to height. ^{*} Projection distances are approximations. ^{*} Projection distance: Distance from the edge of the case to the screen.

XGA models (Aspect ratio: 4:3)

Screen size	W x H	Advanced Series	
		Shortest	Longest
40-inch	0.8m x 0.6m	1.27m	1.88m
60-inch	1.2m x 0.9m	1.95m	2.87m
80-inch	1.6m x 1.2m	2.64m	3.86m
100-inch	2.0m x 1.5m	3.33m	4.85m
150-inch	3.0m x 2.3m	5.04m	7.33m
200-inch	4.1m x 3.0m	6.76m	9.82m
300-inch	6.1m x 4.6m	10.18m	14.78m

Projection distance



Supported applications

For details about support information for various operation systems, check the CASIO website.

Network projection app for PCs: C-Connection

- Windows <https://support.casio.com/en/support/download.php?cid=007&pid=2380> (CASIO website)
- macOS <https://support.casio.com/en/support/download.php?cid=007&pid=2381> (CASIO website)
- Chrome OS The Chrome OS version will be available in June, 2019. (Chrome Web Store)

Wireless Projection App C-Connection for portable

- Windows <https://support.casio.com/en/support/download.php?cid=007&pid=2487> (CASIO website)

Network projection app for smart devices: MirrorOp Presenter

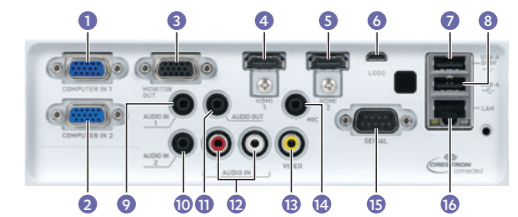
- Android <https://play.google.com/store/apps/details?id=com.awindinc.mirrorop.presenter> (Google Play)
- iOS <https://itunes.apple.com/us/app/mirrorop-presenter/id808539605> (App Store)

PC remote app for smart devices: MirrorOp Receiver

- Android <https://play.google.com/store/apps/details?id=com.awindinc.receiver> (Google Play)
- iOS <https://itunes.apple.com/us/app/mirrorop-receiver/id408374570> (App Store)

Interfaces

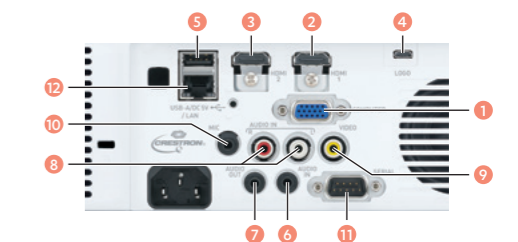
Superior Series



- 1 Computer terminal 1
- 2 Computer terminal 2 *
- 3 Monitor output terminal *
- 4 HDMI terminal 1
- 5 HDMI terminal 2
- 6 USB terminal (Micro-B)
- 7 USB terminal (Type-A) 1
- 8 USB terminal (Type-A) 2 *
- 9 Audio input terminal 1
- 10 Audio input terminal 2 *
- 11 Audio output terminal
- 12 Audio input terminal (RCA)
- 13 Video input terminal (RCA)
- 14 Microphone terminal *
- 15 Control terminal (RS-232C)
- 16 Wired LAN terminal *

* Compatible models: XJ-S400UN / S400WN

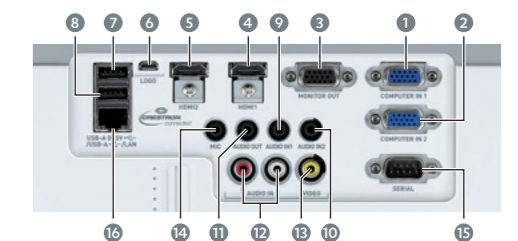
Advanced Series



- 1 Computer terminal
- 2 HDMI terminal 1
- 3 HDMI terminal 2
- 4 USB terminal (Micro-B)
- 5 USB terminal (Type-A)
- 6 Audio input terminal
- 7 Audio output terminal
- 8 Audio input terminal (RCA)
- 9 Video input terminal (RCA)
- 10 Microphone terminal *
- 11 Control terminal (Type-A)
- 12 Wired LAN terminal *

* Compatible models: XJ-F211WN / F21XN

Ultra Short-Throw Series



- 1 Computer terminal 1
- 2 Computer terminal 2
- 3 Monitor output terminal
- 4 HDMI terminal 1
- 5 HDMI terminal 2 ^{*1}
- 6 USB terminal (Micro-B)
- 7 USB terminal (Type-A) 1
- 8 USB terminal (Type-A) 2 ^{*2}
- 9 Audio input terminal 1
- 10 Audio input terminal 2
- 11 Audio output terminal
- 12 Audio input terminal (RCA)
- 13 Video input terminal (RCA)
- 14 Microphone terminal
- 15 Control terminal (RS-232C)
- 16 Wired LAN terminal ^{*2}

^{*1} Compatible models: XJ-UT352WN / UT352W
^{*2} Compatible models: XJ-UT352WN / UT312WN

Option

Wireless LAN adapter [YW-41]



The YW-41 is an adapter used for wireless LAN connections for network-enabled models. The adapter supports the IEEE 802.11 b/g/n standard.

* Supported models: XJ-S400UN / S400WN, XJ-F211WN / F21XN, XJ-UT352WN / UT312WN